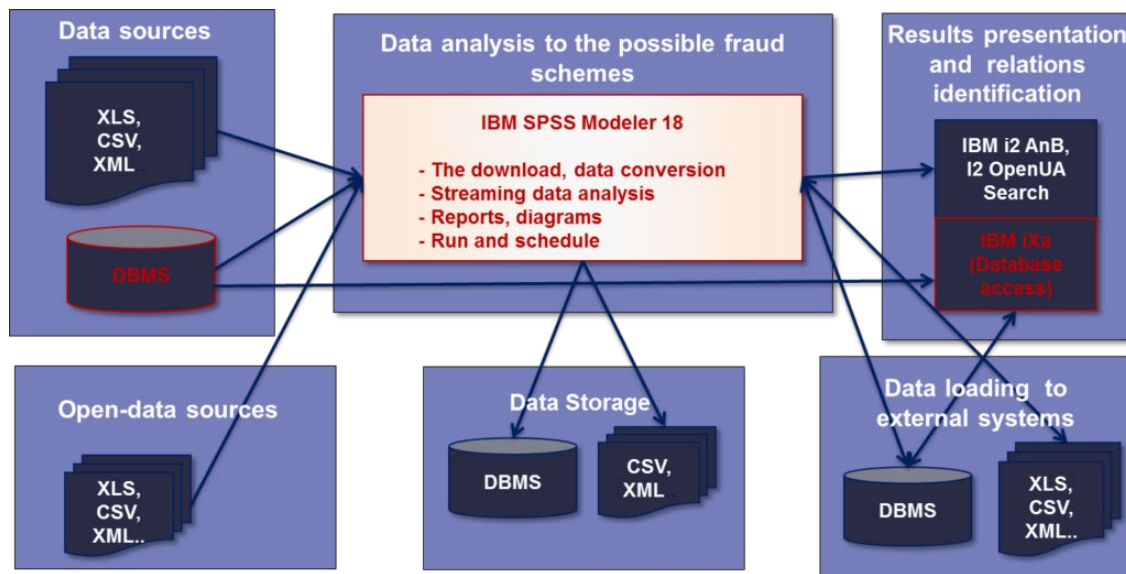


The anti-fraud scheme

The i2 anti-fraud typical scheme (The universal platform for the collection, data analysis and visualization):

- The property dependency identification from the same founders
- Establishing the factual dependence between legal persons
- The financial flows analysis.

Anti- Fraud System Architecture



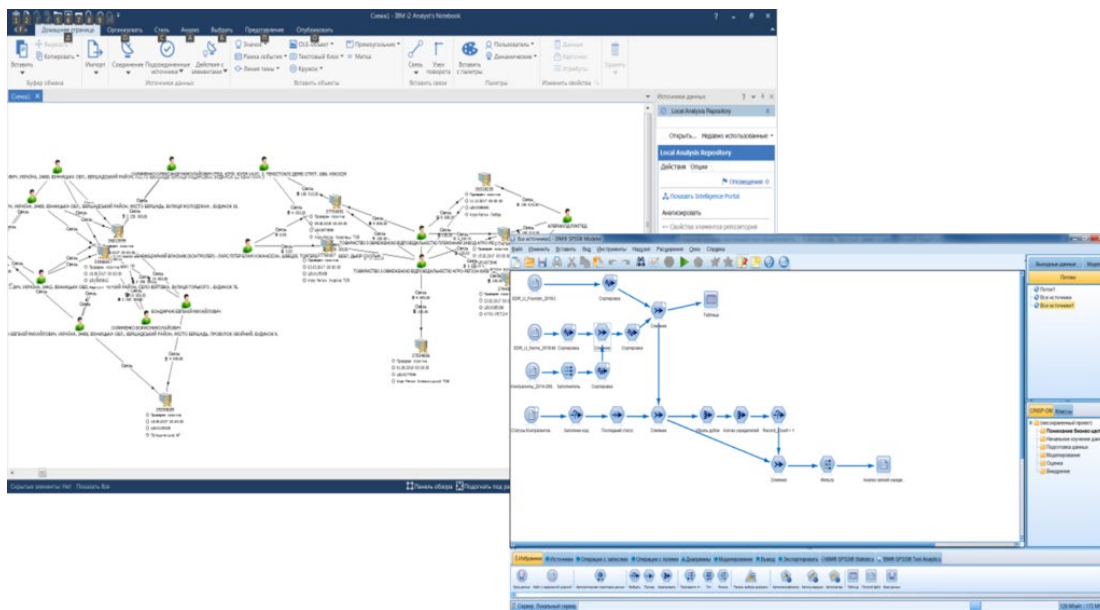
The Information and Analysis System Functionality:

- The work with both commercial and available as an exchange with other structures the external sources
- The data presentation during the analysis, as well as its results in the diagrams and graph form
- The quality and information reliability evaluation
- The analysis results registration in the form of the analytical reports and visualization
- Using the specialized analytic functions
- The information work and storage is both in the databases and in the files
- Work in the cloud service mode with minimal changes to the customer's infrastructure
- The possibility for an in-depth modification of the system logic, creating new rules and modifying old ones
- IBM SPSS Modeler Functionality
- The ability to immediately respond to an incident, for example the blocking transactions
- The advanced technology to conduct investigations and to visualize the analysts work based on i2
- The open architecture – the possibility to add the existing solutions and business processes into the logic of the system
- Connection to Databases
- Uploading data to Databases
- Presentation and visual analysis with IBM i2
- Predictive Statistical Analysis

The problems that are solved with the anti-fraud automation:

- Work with the wide set of the object types and the relationships between them
- The nontrivial fraud detection algorithms
- Using information external sources (open and provided by subscription)
- The different sources' integration into the single information system
- problem of the same person identifying in the different systems
- The records' duplication about the same object
- Search for the hidden connections between the objects

The system main components (example)



- The companies' common founders analysis from the "Blacklist"
- Download and analysis the quality of input data
- The download and work with open data sources
- The results' visualization in the form of the objects and relations on the i2 schema.